

The Loon Flyer

Squam Lakes Winter Wonderland

For some, the onset of cold winter temperatures and snowy forecasts is something they dread starting Labor Day weekend. Here at the SLA, we prefer to look at the winter weather as an opportunity to enjoy the outdoors in a different way. The SLA's Annual Winterfest event shows us that much of the community agrees! This year's event marked the 15th year that the SLA has been hosting this celebration of all things winter, and with over 200 people in attendance, we'd say it was another great success.



Winterfest 2011 was a huge success! (Photo courtesy of Dan Stack)

What we hoped to share with everybody at Winterfest is the fact that there are lots of fun activities you can enjoy when the winter weather hits. Snowshoeing, for one, offers a great opportunity to enjoy the quiet solitude of the outdoors. All of your favorite summertime SLA trails are open in the winter. Every storm, the SLA plows out the parking areas at Rattlesnake, Morgan, Chamberlain Reynolds, Belknap Woods and Cotton Mountain. Some of these trails are also great for cross-country skiing, another great winter pastime.

Then, there is always the tried and true ice-skating or ice fishing. Always be sure that the ice is safe before venturing out on it, though, even if others have been out on the lake recently. According to the NH Fish and Game Department, ice should be at least 4-6 inches thick to support your weight.

Winter recreation can be just as fun as summer recreation, as long as you play safely. Always dress in layers, invite friends to join you, bring food and hot drinks, always check the ice before walking on it, and just like in the summer time, notify friends, family or neighbors of your outdoor plans and when to expect you to return.



Congrats to the Manor on Golden Pond, Jose Locos and All Out Wildlife for taking home first, second and third place in the Chili Contest at Winterfest (Photo courtesy of Dan Stack)

All of your favorite summer-time SLA trails are open in the winter.



Cross country skiing is a great way to explore the watershed during winter months



The Squam Lakes Association is dedicated to conserving for the public benefit the natural beauty, peaceful character and unique resource values of the lakes and surrounding area.

In cooperation with local and state authorities and other conservation organizations, the Association promotes the protection, careful use and shared enjoyment of the lakes, mountains, forests, open spaces and wildlife of the Squam Lakes region.

Board of Directors

President - Earle Jenkins
 1st Vice-President - Peter Webster
 2nd Vice-President - Sarah Thorne
 Treasurer - Maria Furman
 Secretary - Tom Enright

Directors

Jane Beck
 John Coolidge
 John Fernandes
 June Hammond-Rowan
 Eve Porter-Zuckerman
 Rebecca Pepper Sinkler
 Dan Stack
 Carolyn Tolles
 Peter Walcott
 Kathleen Wheeler
 Chris Williams

President Emeritus

Tim Fisher

Staff

Executive Director - Christopher Devine
 Office Manager - Priscilla Bartholomew
 Director of Recreation - Brett Durham
 Youth Program Manager - Jennifer Walker
 Ecological Manager - Rebecca Harvey

The Loon Flyer is published by The Squam Lakes Association
 P.O. Box 204
 Holderness, NH 03245
 Phone: (603) 968-7336
 e-mail: info@squamlakes.org
 website: www.squamlakes.org

SAVE THE DATE!

Auction Fundraiser to benefit the Squam National Register Project
 Sunday, July 10, 2011
 From 6 to 8 pm
 At Burleigh Brae
 Burleigh Farm, Holderness
 Questions: Betsy Whitmore (603) 968-7548

Holderness to Celebrate 250th Birthday

On October 24, 1761 the town of Holderness was founded under a grant from King George III. Now, 250 years later, plans are underway to celebrate the heritage of the town with a series of cultural activities including historical re-enactments, special observances, parades, dances, and performances.

Though the SLA is a mere 107 years old this year, the Town of Holderness is an important part of the Squam Watershed and the SLA community. The weekend of August 5-8 has been set aside for the 250th Celebration, which conveniently includes the date of our Annual Meeting. As summer approaches, be on the lookout for a unique 2011 Annual Meeting to celebrate the birthday of our home town.

Visit www.holderness250.org to learn more about Holderness and this year's 250th Celebration. Tax exempt contributions are happily being accepted to help pull all of this off: Holderness Historical Society, Attn: 250th Celebration, P.O. Box 319, Holderness NH 03245.



CONSUMMATE COMFORT, MEMORABLE DINING WITH
 EXEMPLARY SERVICE
 603-968-3348 ** 800-545-2141
 31 MANOR DRIVE
 HOLDERNESS, NEW HAMPSHIRE

Did you know?

If you're new to winter fun, the SLA offers guided excursions and can lend some equipment!

Call for more details!

Public Notice:

In order to simplify, modernize and clarify, the SLA Board of Directors has proposed a restatement of our By Laws. Please visit www.squamlakes.org and click "SLA By-Law Revision Draft" under News and Events to read the Current and Restated By Laws and to learn how to submit your comments.

Calling All Wooden and Vintage Boats

Peter Francesco

Many plans are coming together for our celebration of the 250th anniversary of Holderness. Among the beautiful things Holderness and Squam Lake offer are the cultural history we celebrate this year and the beautiful wooden and vintage boats we are privileged to enjoy seeing every year, all summer long. We are excited to announce one of the highlights of the Holderness 250th Celebration is the Wooden and Vintage boat parade, but Holderness needs the boats and captains to help pull it together!

We are asking for Wooden and Vintage boats and captains to congregate in Cotton Cove at 10:45am on the morning of August 6th. Boats will be arranged chronologically and the parade will follow the Squam Channel, and go a distance in Little Squam; street parade watchers will be able to observe from both the bridge and the shore of Curry Place. We also may ask some captains to assist in ferrying members of the Mattatuck Drum Band (formed in 1767... scant years after the town of Holderness).

If you and your boat are available, we would appreciate your informal registration by contacting Peter Francesco. Phone: 603-968-7355, E-mail squam@wildblue.net or mail at PO Box I, Holderness, NH 03245.



Memorial Day Boat Parade 1969

Donovan
TREE EXPERTS

of Meredith, NH

(603) 279-3267

info@donovantree.com

**"Trees Create Harmony Between
Man And The Environment"**



It takes a **VILLAGE**
to make a **TEAM**.

Working together as **one**.
For the community of **all**.

11 locations throughout the Lakes Region
Toll Free: 1-800-922-6872



www.mvsb.com/values



Respect | Integrity | Teamwork | Excellence | Stewardship

Volunteer Spotlight: SLA Board Member Carolyn Tolles



Carolyn Tolles serves on the SLA Board of Directors

Carolyn Tolles joined the SLA team as a Volunteer Board Member in 2010 but her connection to the lakes started as a child, when she would visit family on Sandwich Bay to enjoy the natural playground the area provides.

During the summer of 1960 Carolyn's commitment to Squam surpassed simply enjoying them as a recreationist when she became member of the Rockywold-Deephaven Camp's Recreation Committee.

Her love for the region continued to grow and in 1969 Carolyn, her husband Bryant (a former SLA Board Member), and Bryant's parents built a house on the lake in Center Sandwich. Since then four generations of Tolles' have enjoyed the homestead. Carolyn believes in the SLA's efforts to protect the special character of the Squam Lakes for future generations, and as a Board Member hopes to help the association continue to foster stewardship across generations.

Carolyn worked primarily as a fund-raiser but has since retired and now lives in Concord, NH. Carolyn and Bryant are active lake users and spend time throughout the year rowing, canoeing, kayaking, hiking and cross-country skiing on and around the Squam watershed.

Organic Pancake Breakfast

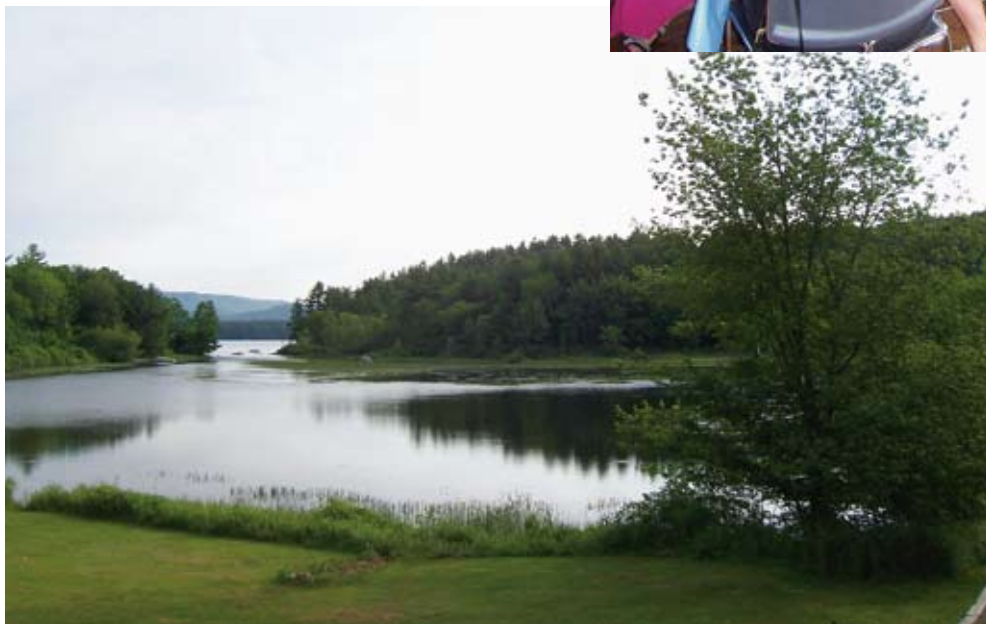
May 28, 2011

8:30am-10:00 am

The Squam Lakes Association is hosting its Annual Pancake Breakfast on Saturday May 28th from 8:30am-10:00am. Our organic pancakes and locally collected maple syrup are continually a hit; so we're bringing them back this year. We hope you'll join us for some more good food with your neighbors from around the lake. Enjoy these photos from the 2010 Pancake Breakfast!



2010 Pancake Breakfast



A picture perfect morning provided the backdrop for our 2010 Pancake Breakfast

2011 Harvest in Chamberlain Reynolds Memorial Forest

Though the SLA maintains the Chamberlain Reynolds Memorial Forest, the property was actually given to the New England Forestry Foundation (NEFF) by Mr. John C Wister in 1953. The 150-acre property is one of the most popular public access points in the Squam Lakes Region and is frequented by community members, school groups and our own youth programming each year.



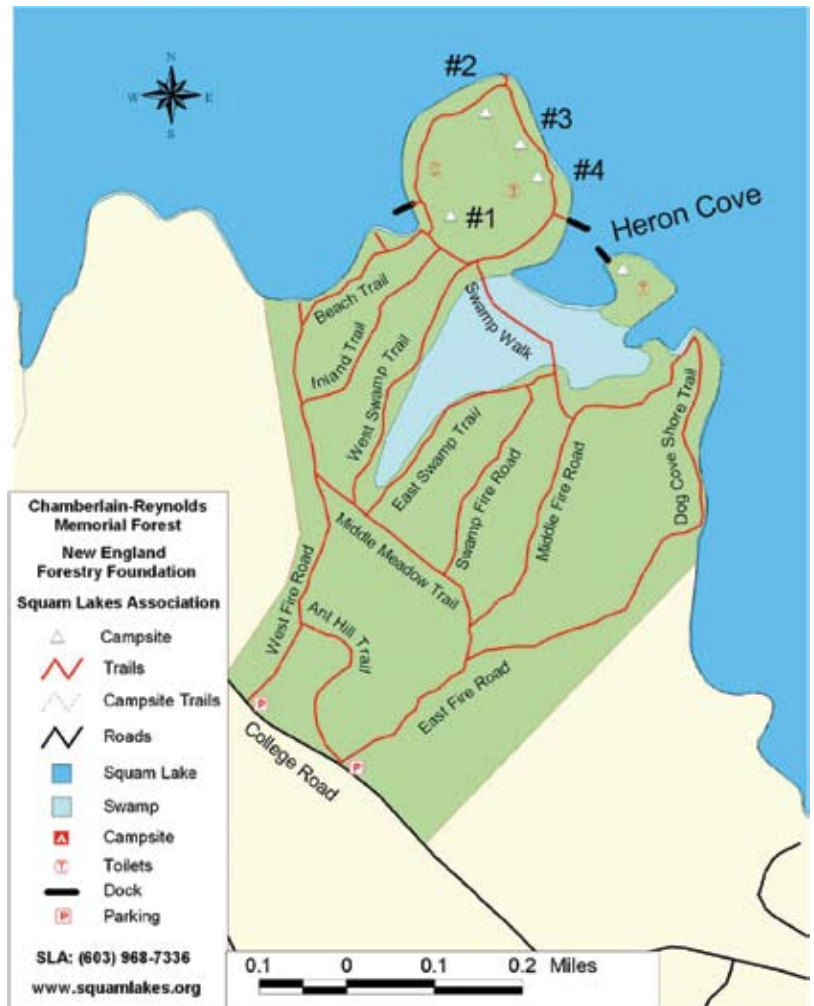
Sustainably harvested timber from Chamberlain Reynolds Memorial Forest

The Chamberlain Reynolds Memorial Forest is sustainably managed for the production of timber in addition to providing services as a natural and recreational area. The 2011 harvest is one of a continuum of harvests done periodically on a 7-to-10 year cycle and will cover approximately 50 acres of forest. As with previous harvests, the objectives of this harvest will be to improve the productivity and quality of the forest stands while enhancing wildlife habitat, protecting unique natural features and maintaining the quality of the recreational experience for the visiting public.

The SLA maintains the parking lots at Chamberlain Reynolds throughout the winter, and the hiking trails have not been affected by the harvest, so feel free to enjoy this property year-round. Please remember to maintain a safe distance from any heavy-duty equipment or working loggers. For more information on the New England Forestry Foundation and their mission for sustainable forest management, or on this harvest, visit www.newenglandforestry.org.



Every storm, the SLA plows out the parking areas at Rattlesnake, Morgan, Chamberlain Reynolds, Cotton Mountain and Belknap Woods



The Chamberlain Reynolds Memorial Forest provides 3.5 miles of gentle hiking trails and four backcountry camping sites, which must be reserved through the Squam Lakes Association



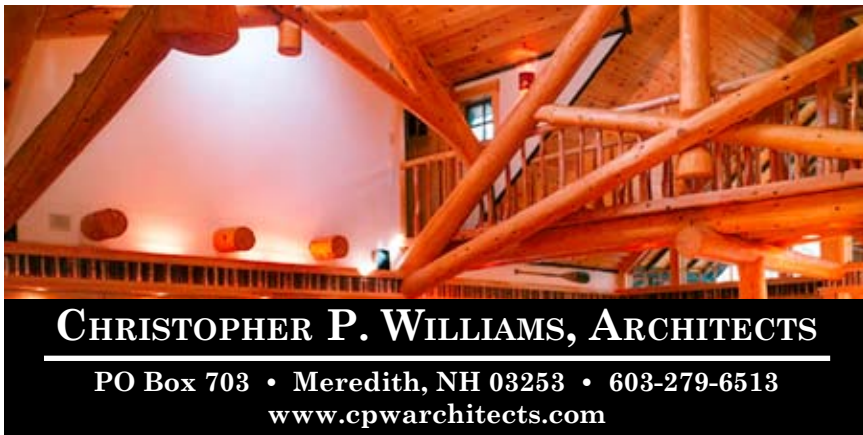
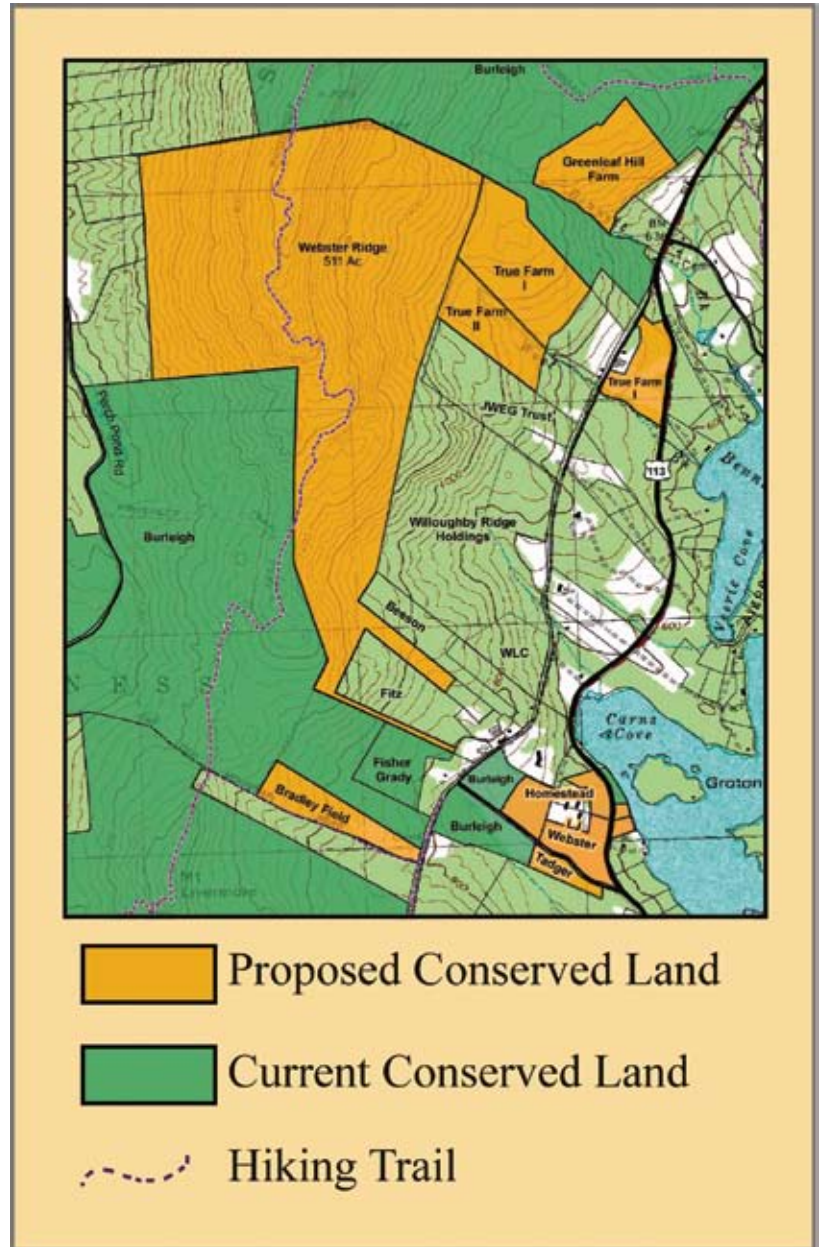
Important Partnerships Protect the Squam Watershed

The Squam Lakes are lucky, in a sense, to be under the caring protection of three different local associations; the Squam Lakes Natural Science Center, the Squam Lakes Conservation Society and the Squam Lakes Association. Through personal experiences with native wildlife species, the Science Center educates its visitors on the importance of protecting natural habitats. By seeking, holding, and monitoring conservation easements and by accepting land ownership, the Conservation Society achieves the long-term protection of land. Here at the Squam Lakes Association, we provide the opportunity for all to experience the lakes; creating lifetime memories and lake stewards for generations to come.

Sometimes, a project presents the unique opportunity for two or more of these associations to work together to reach a common goal, case in point; the Three Farms and Webster Ridge Project. The Three Farms and Webster Ridge Project is an effort shared between the Squam Lakes Conservation Society, the Squam Lakes Association and a suite of land owners, land trusts, family foundations and the greater Squam Community and involves the conservation of 750 acres of land along the Squam shorefront and the Squam Mountain Range.

In line with its mission, the Conservation Society has taken the lead in this project. Meanwhile, the SLA realizes the importance of protecting this portion of the Squam Range for the unique wildlife habitat it provides, the role it plays in assuring good water quality, the low-impact recreational uses it provides, and the scenic and historical values it preserves. The SLA has pledged or granted nearly \$50,000 to the Conservation Society in support of the stewardship costs for several projects including the Three Farms and Webster Ridge Conservation Project project, but the value it provides the lake and community is priceless.

For more information about the Three Farms and Webster Ridge Project and how you can help support it, contact the Squam Lakes Conservation Society by visiting www.squamlakes.com.



Eco-Friendly Printing

Making sound environmental choices when selecting paper, chemicals, equipment and printing processes

Venture PRINT
UNLIMITED • INC

Plymouth • 536-2410
Bristol • 744-2600
printunlimited.com

Camping on Squam Lake

It is always a surprise to hear that people do not know that SLA offers camping on the lake. In fact, there are four campsites on Bowman Island, three on Moon Island, and five in Chamberlain Reynolds Memorial Forest. These campsites have limits of either 6 or 12 people to keep impacts to a minimum. In the summer of 2010 we had 955 nights of camping at our sites; that's around 7,000 people camping on Squam at our campsites in one year!



Happy Camping on Squam

Due to the popularity of our campsites, we start off each year with a camping lottery to make it as fair as possible for everyone who would like to camp on Squam. This year we had almost 200 people in the lottery vying for the best campsites at the most popular times. Needless to say, there were many who did not get their preferred site.

We are often asked which sites are the best: the quietest, have the best views, or the best tent platforms. Well the simple answer is: it depends on what you like.

Bowman #4, is the most requested large site.

Moon #2 is the most requested small site followed closely by Heron Cove.

Wister #1 is known for the best/biggest beach, while Heron Cove is the most secluded of the campsites.

Moon #2 and Bowman #3 have the best tent platforms, consisting of pea stone carried out in 5 gallon pails by summer workers and volunteers.

The site with the best views would be very debatable, with that category probably going to sunset rock or the shores of Moon Island for spectacular sunsets and sunrises.

Camping on Squam is available to anyone. If you do not have access to a boat for travel to our islands you can rent a canoe or kayak from us. Just go to our website for more info on boat rentals and to see what sites are available and when. Reserve your sites now, as many weekends during the summer are booking quickly.

Word Search Squam's Coves, Reefs, and Bays

O	G	D	R	A	T	T	L	E	G	D	E	L	N	A	E	B
Y	L	I	L	O	N	S	E	L	B	B	U	H	H	A	C	E
H	O	A	C	T	N	C	P	I	P	E	E	T	E	E	A	N
O	W	M	A	T	D	O	G	D	E	H	K	R	R	B	F	E
R	A	O	T	U	E	T	T	T	I	U	A	E	O	U	R	V
O	U	N	L	R	E	T	T	O	R	B	N	D	N	L	E	A
B	Q	D	E	I	T	O	N	N	E	R	S	A	N	I	E	H
N	S	L	E	B	V	N	T	A	E	S	E	K	E	L	P	P
O	E	E	E	E	E	E	O	T	V	H	L	E	K	B	E	E
T	K	D	P	N	E	V	R	B	D	E	T	L	F	K	N	E
L	A	G	M	N	R	P	A	M	E	R	T	I	Y	S	N	D
U	L	E	U	E	S	I	H	Z	O	A	A	R	S	Y	A	B
O	M	S	S	T	Q	P	S	Z	T	R	R	T	U	E	Z	L
M	A	Q	E	T	U	E	H	O	D	G	E	S	L	T	U	I
A	U	S	K	C	O	R	R	E	B	M	E	T	P	E	S	L
O	Q	T	S	E	V	O	C	A	M	S	L	O	H	C	I	N
H	S	U	B	D	A	H	S	A	N	D	W	I	C	H	O	M

WORDS TO FIND:

- | | | |
|---------------|-------------|------------------|
| BAYS | HODGES | REEFS |
| BEAN LEDGE | HUBBLES | SANDWICH |
| BEAR | KESUMPE | SEPTEMBER ROCKS |
| BENNETT | LILY | SHADBUSH |
| CAMS | LIVERMORE | SQUAMLAKES |
| COTTON | MOULTONBORO | SQUAW |
| COVES | NICHOLS | STURTEVANT |
| DEEPHAVEN | OTTER | SUZANNE PEERFACE |
| DIAMOND LEDGE | PIPER | TRUE |
| DOG | RATTLESNAKE | VEERIE |
| HERON | | |



Around 7,000 people camp at SLA sites each year!



Squam Lakes Association

P.O. Box 204

Holderness, NH 03245

(603) 968-7336

e-mail: info@squamlakes.org

Address Service Requested

Youth Program Info Enclosed

Squam Lakes Association 2011 EVENTS CALENDAR



- FEBRUARY - APRIL: Create your own adventure! Contact the SLA to plan your own customized Squam Adventure: guided snowshoe trips, xc-ski and stay at Bowman Cabin, nordic-skate tours, day trips or overnights, we can provide some equipment. Call today!
- FEB 28: Summer Youth Program Registration Opens
- MAY 1: Campsites Open
- MAY 21: Boat Rental Opens (weekends only)
- MAY 28: Pancake Breakfast, SLA Resource Center, 8:30am-10:00am
- JUNE 4: National Trails Day
- JUNE 27: SLA Youth Programming Begins
- JULY 23: Hike for the Trails Day
- AUG. 6: SLA Annual Meeting

Visit www.squamlakes.org and click on our "Events Calendar" for up-to-date event information and more information on SLA Events.

Member Address Change

Contact our office if your mailing address has changed or to share your e-mail address with the SLA. Also, if you have separate winter and summer addresses, please let us know the dates you are in residence at each address.

SLA is fined 70¢ for every piece of forwarded bulk mail. You can either call the office at (603) 968-7336 or send an e-mail to info@squamlakes.org.