



the *Loon Flyer*

Published by the Squam Lakes Association Spring 2002



THE BUG MEN COMETH!

By Dr. Rick Van de Poll

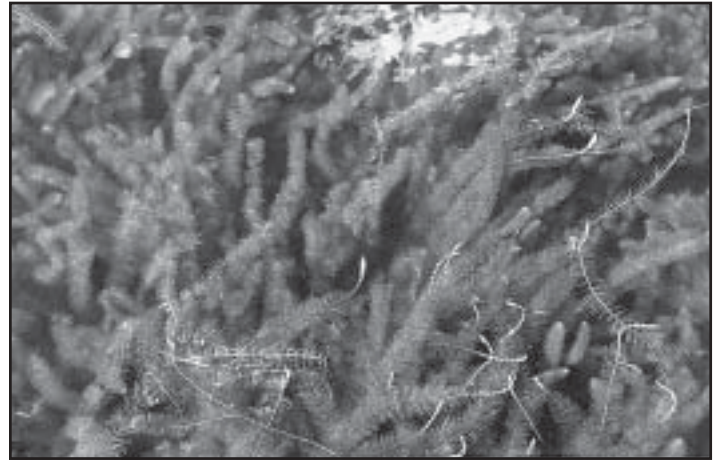
Grab your D-frame net, hop in the boat, and hold onto your hat – we're off to collect yet another "bug" sample on Squam Lake! Otherwise known as aquatic or benthic macro-invertebrates (or BMI's for short), bio-inventory specialists Dr. Rick Van de Poll and David Graham Wolf (otherwise known as the "Bug Men"), are off once again to collect a few remaining samples of these tell-tale indicators of water pollution. Last years effort produced a whopping 5367 individuals among 277 species (taxa) within 54 samples! All of these were collected between July and October 2001 within 13 of the 22 permanent plots the researchers have established thus far.

Among the fascinating finds from the deeps of Squam were freshwater jellyfish in Bear Cove, stream-loving stone flies at Yard Islands, ten different leaches (mostly from Heron Cove and White Oak Pond), 27 types of mayflies, 39 types of caddisflies, seven types of clams, a freshwater limpet and one exotic snail – *Cipangopaludina chinensis*, the Chinese Mystery Snail!

Each one of these creatures has been rated for pollution tolerance by the EPA, and the good news is: the Squam Lakes are doing GREAT! On a zero to ten rating, most of the 13 sites came in under 6, and a few, such as Smith Brook and Belknap Woods Brook came in under 3! (The "cleanest" stream in the region ranks approximately a '2'). The highest values came from those sites with heavy boat traffic and low water circulation, where *Chironomids* (midges), snails, and Tubificid worms were prevalent.

Although more collections are still taking place and the statistical analysis of the 54-sample data is still underway, it appears that our "bugs" are telling us we still have relatively clean waters in the watershed. Most importantly, we now have a set of very accurate and detailed base line data from which to make future water quality comparisons. Never before has such an in-depth study of macro-invertebrates taken place in the Lakes Region. By study's end, all 16 of the aquatic plots with regular inundation will have been sampled using a D-frame

Continued on page 6



Variable Milfoil, shown above during the summer of 2001 is an invasive plant and early detection is the key to effective management. Call Lisa Vickers at SLA to sign up as a Volunteer Weed Watcher - see story on page 5. Photo by Eric Morse.

CAPITAL CAMPAIGN UPDATE

Thanks to the generous support of our membership the association has been able to accomplish many of the goals of our 2000 Capital Campaign. One of the primary goals was to strengthen our endowment and to date we have made new investment of \$675,000. We have completed property acquisitions to protect Red Hill and to provide parking for our headquarters facility.

At a retreat held last fall, the SLA Board of Directors discussed the direction for the association and the facility improvements necessary to achieve them. The consensus was that we were going to expand our scientific programs to strengthen our watershed conservation efforts. Water quality monitoring of the lakes and tributaries, the bioinventory commenced in 2001, and our ongoing milfoil management efforts require improvements to our facility. In the past year the association has added three experienced biologists to assist in these efforts. This spring we constructed a boat storage facility to consolidate equipment storage. This fall we will commence renovation of the east and west wings of our main building, creating additional office space, a meeting room/classroom, a laboratory and adding visitor's facilities. We have also officially changed the name of our facility from the SLA Headquarters to the SLA Resource Center.

Visit the SLA website at www.squamlakes.org

The Loon Flyer is published quarterly by



Squam Lakes Association
PO Box 204, Holderness, NH 03245
Phone: (603) 968-7336
e-mail: info@squamlakes.org
www.squamlakes.org

The Squam Lakes Association is dedicated to conserving for the public benefit the natural beauty, peaceful character and unique resource values of the lakes and surrounding area. In cooperation with local and state authorities and other conservation organizations, the Association promotes the protection, careful use and shared enjoyment of the lakes, mountains, forests, open spaces and wildlife of the Squam Lakes region.

Board of Directors

President

Timothy Fisher

1st Vice-President

Allan Fulkerson

2nd Vice-President

J. Woodward Laverack

Secretary

Anne Rogers

Treasurer

Matthew Weatherbie

Directors

Julian Coolidge

Cyrus Gibson

Ethel Hamann

Jeffrey Keefer

Anne Lovett

Maggie Mumford

Michael O'Leary

Sara Rothschild

Janet Sawin

Sarah Sherrill

Peter Sorlien

Staff

Executive Director

Christopher Devine

Natural Areas Manager

Eric Morse

Office Manager

Priscilla Bartholomew

Facilities Coordinator

Steven Sanders

Office Assistant

Carol Snelling

CONCORD BEAT

This past legislative session has seen much success with regard to lake protection issues. A large part of this success was the contribution of a statewide grassroots lobbying effort organized by the New Hampshire Lakes Association. If you would like to keep informed of current legislation and/or participate in these efforts, please e-mail your name and mailing address to info@squamlakes.org. We'll put you on the e-mail list for legislative updates and send you a handbook on how you can participate in the democratic process.

HB592-FN-A is a bill to increase funding for the state aquatic plant management program. The current funding is derived from a \$1.50 surcharge on boat registrations and this bill increases this surcharge to \$4.50. The bill has passed the house and senate and awaits signature by the Governor. The net impact of this bill will be an increase of the current aquatic plant budget from ~\$145,000 to ~\$435,000 per year.

SB89 was a bill passed this session to form a legislative committee to study the effectiveness of the Shoreland Protection Act (SPA) passed in 1996. The

committee held several hearings and produced a report with recommendations for strengthening the act. As a result of these efforts three bills were presented to improve the shoreland protection act and these bills have passed the house and senate and await signature by the Governor. **SB451** implements language and definition clarifications that will improve understanding and enforcement; **SB452** creates a new fine schedule that doubles the fines on each day of a continuing violation and **SB453** sets a minimum 50 foot primary building line setback from the shoreline removing the adoption of a lesser standard by municipalities while allowing a grandfathering period.

SB146 was a bill to create a definition for personal watercraft that would include the currently regulated 1 and 2 person 'skicraft' as well as the larger 3 or more person craft. This bill would not result in further prohibitions or bans but would allow for consistent regulation of similar craft. After holding hearings before the Senate Wildlife Committee, the committee voted 3 to 2 in favor of the bill. The bill was presented before the full Senate and received a 12 to 12 deadlocked vote.

Continued on Page 3.

The Squam Lakes Association gratefully acknowledges the support of

Squam Boat Livery, Inc.

(603) 968-7721



whose generous contributions underwrite this issue of the Loon Flyer.

CONCORD BEAT CONTINUED

The bill was subsequently tabled, remained there beyond the required date to cross over to the house essentially precluding the bill from further consideration.

HOW IS THE LAKE LEVEL?

By now many of you are thinking about the summer ahead on the lakes, remembering the low levels we experienced last season and hearing media reports of the regional drought conditions. We have good news to report on the current lake level and we ask you all to keep your fingers crossed that our precipitation patterns continue to improve.

As of April 17, 2002 the lake level was at 562.2 feet and our full pond elevation is 562.5 feet. Over the past twenty years the lakes have typically been at a level of 561.8 in April and we peak at a level of 562.2 in May. So basically we are about one month ahead of schedule for the lake filling and about 4.8 inches higher than normal for this time of the year. There are two good reasons for this being the situation. First, the NH Department of Environmental Services held back the main dam during January and February of 2002 to dewater the Squam River to attempt to freeze off some of the invasive milfoil. Second and more importantly, our precipitation patterns and amounts are improving.

SQUAM SUMMERFEST OFFERS FAMILY FUN

The SLA Membership Committee will host the First Annual Squam Summerfest, a fun and educational day for the Squam community on Saturday July 20 from 10:00 am to 2:30 pm. There will be fun games, boating instruction and paddling races for chil-



Squam Summerfest



July 20th

10 am - 2 pm

<u>Conservation</u> Water Quality Workshop Milfoil Report Wildlife Report Water Quality Report	<u>Education</u> Sailing Kayaking Scavenger Hunt Team Games	<u>Canoe & Kayak</u> <u>Races</u> Family Fun Canoe 1/2 mile Canoe Family Fun Kayak 1/2 mile Kayak
<u>Food</u> BBQ Lunch - Sponsored by Rockywold Deephaven Camps		

dren and adults. Presentations will be offered on Squam's water quality, the management of milfoil in the lake and the health of Squam's wildlife. Come enjoy summer on Squam with your family and friends.

A human scavenger hunt, obstacle course and team building exercises for youth and families will be offered from 10:00 to 11:00. Pick up volleyball games, horse shoes and bocce ball will be available from 11:00 to 2:00. Garr Corcoran, SLA Sailing Instructor will offer an overview of the Community Youth Sailing Program at 11:00. Steve Barrett, SLA Kayak Instructor will demonstrate the SLA Kayak Instruction Progression, including: sweep, touring and brace strokes, kayak rescues and the Eskimo Roll at 11:30.

Jeff Schloss, NH Lay Lakes Monitoring Program Coordinator and UNH Water Resource Specialist will offer a workshop on water quality testing from 10:30 to 11:30 at the SLA waterfront. Jeff will explain the water quality monitoring procedures and will explain why UNH conducts these studies. Jeff will also display plankton samples using a handheld Bioscope.

A Barbecue lunch will be offered for free from 11:45 to 1:00, compliments

of Rockywold Deephaven Camps. Enjoy hot dogs, chips, cookies and lemonade and attend ecological presentations on the health of the Squam watershed at the SLA Resource Center.

Lisa Vickers, SLA Environmental Coordinator will discuss the spread and management of variable milfoil at 12:00. Come learn how to identify variable milfoil and what to do if you find it in the lakes. Peter Sorlien and the SLA Wildlife Committee will present the results of the Loon and Wildlife Census at 12:15. Jeff Schloss, will present a report on Squam's water quality at 12:30.

Family fun canoe and kayak races, such as: backwards, standing and hand paddling will be offered from 1:00 to 1:30. A 1/2 mile canoe and kayak race in Piper Cove will start at 1:30. A canoe and kayak tour around Perch and Potato Islands will depart from Piper Cove at 2:00 and will return to SLA at 2:30 pm. Rental canoes and kayaks are available at SLA and reservations may be placed through the Boat Rental office. Volunteers are needed to help with parking, games, barbecuing food, and the paddling races. Please call SLA if you are interested in volunteering for the Squam Summerfest.



PAST PRESIDENTS

The SLA Centennial Book Committee has been assembling a list of past presidents of the association. With close to 100 years to cover it has been a somewhat arduous task and we need your help in verifying the information. If you have a records or information that might help us, please give us a call.

<i>Timothy Fisher</i>	2001-
<i>Pete Richards</i>	1999-2001
<i>John Thompson</i>	1996-1999
<i>Tony Unger</i>	1993-1996
<i>Peter Van Winkle</i>	1991-1993
<i>Sidney Lovett</i>	1989-1991
<i>Samuel Neel</i>	1987-1989
<i>John Laverack</i>	1985-1987
<i>Fred Rozelle</i>	1983-1985
<i>Malcolm Taylor</i>	1981-1983
<i>Daphne Mowatt</i>	1979-1981
<i>Austin Broadhurst</i>	1977-1979
<i>Rawson Wood</i>	1975-1977
<i>Arthur C. Unsworth</i>	1973-1975
<i>Richardson Blair</i>	1971-1973
<i>Hamilton Coolidge</i>	1969-1971
<i>L.F. Middlebrook</i>	1967-1969
<i>Davis Thurber</i>	1965-1967
<i>William N. Seery</i>	1964-1965
<i>W. Allen Miller</i>	1961-1964
<i>Arthur C. Unsworth</i>	1959-1961
<i>John P. Rich</i>	1957-1959
<i>D.A. Gregg</i>	1956-1957
<i>Paul Butterworth</i>	1953-1956
<i>T.G. Speers</i>	1949-1953
<i>George J. Mead</i>	1947-1949
<i>George S. West</i>	1942-1947
<i>Laurence J. Webster</i>	1928-1942
<i>George F. Swain</i>	1923-1928
<i>Clifford Griswold</i>	1917-1923
<i>Alice M. Bacon</i>	1915-1917
<i>Thomas Osborne</i>	1913-1915
<i>H.J. Hughes</i>	1912-1913
<i>Ora A. Brown</i>	1910-1912
<i>Harvey Rhue</i>	1908-1910
<i>Laurence J. Webster</i>	1904-1908

DID YOU KNOW....

That the earliest human occupation of what is now New Hampshire and Vermont occurred about 11,500 years ago at the end of the last Ice Age? Here in the Pemigewasset Drainage, some 17 areas of significant archeological inter-

est have been identified, including the recently excavated Davison Brook Site, at the juncture of Davison Brook and the Squam River in Holderness, in the vicinity of the Science Center. These early inhabitants of Squam were the ancient ancestors of the people now known as the Western Abenaki, one of the many native subgroups that spoke a long chain of related dialects in the Eastern Algonquian language family. Findings indicate that Native American presence in the area probably began during the Archaic period (10,000 to 3,000 years ago). A distinct people, the early natives were part of a web of complex societies that identified themselves according to shared language, kin ties, and a common history. They were highly mobile, but not nomadic. As hunter-gatherers, they traveled among a series of villages, settling in for a period of a few weeks up to several months depending on the opportunities for hunting and fishing that a given location might offer at a particular time of year. Tools, stone chips, pottery shards, turtle, deer, and muskrat bones, and the remnants of more than 20 cooking hearths suggest that natives occupied the Davison Brook Site with their families and dogs about 4,000 years ago and reused it repeatedly, if intermittently, over 40 generations, first as a village and later for burials. The last native activity

occurred about 2,800 hundred years ago, when the site was abandoned for unknown reasons. We continue to look for contributions to the Squam Lakes History project.

If you have comments to make about this or any other aspect of Squam history, please feel free to contact Rachel Carley by e-mail: rcarley@hotmail.com or by mail: 39 Hyland Avenue, Woodbury, CT 06798, or phone: (203) 263-2842. Or call the SLA office at (603) 968-7336.

RARE GLIMPSES OF AN EARLY SQUAM CAMP

The Membership Committee will take you back in Squam History on Tuesday morning, August 13, 2002 to visit with the Coolidge Family.

In 1899 four Coolidge brothers bought a farm from Batchelder Hodge. In 1908, architect J. Randolph Coolidge and his wife Mary Coolidge, founder of the Sandwich Home Industries and later the New Hampshire League of Arts and Crafts, took over Hodge Farm, situated on what is now Coolidge Farm Road, in Sandwich. There they spent their summers, most of the children sleeping in tents in the fields, as the house was too small.

BIKE AROUND THE LAKE

SUNDAY JULY 14TH

1:00 PM AT SLA



Bike Around the Lake is a fun family bike ride that supports the SLA Youth Programs.

The funds raised will support JSLA and CYSP scholarship and equipment funds.

For more information visit www.squamlakes.org or call SLA at (603) 968-7336.

Sponsored by Rockywold-Deephaven Camps



Jack and Tudor Richards, grandsons of Mary and J. Randolph Coolidge, will speak about family history and reminisce on their summers together by the lake at this historic home.

This event was prompted by SLA's Centennial book project to be completed in the Spring of 2004. Rachel Carley, the author, will highlight some of the fascinations in her journey through the history of the Squam Lakes. Proceeds from this event will help defray the cost of the book. More details will follow.

WEED WATCHERS ARE NEEDED TO MANAGE MILFOIL

SLA needs your help to monitor invasive plants, such as variable milfoil on Big and Little Squam Lakes. Early detection is the most effective management tool to control the spread of non-native milfoil. Areas of the lakes that are less than 20 feet deep and have a muddy or dredged bottom are more susceptible to milfoil infestations. Areas of Squam that are susceptible to milfoil infestations include: Squaw Coves, Bean Cove, Sturtevant Bay (southeast), Nichols Cove, Dog Cove (south), Cotton Cove, Rattlesnakes Cove, and Five Finger Point.

Volunteer Weed Watchers monitor a section of shoreline on a regular basis and bring samples of suspicious plants to SLA for identification. Contact Lisa Vickers, SLA's Environmental Coordinator if you are interested in volunteering this summer. A Weed Watcher Training will be offered by Amy Smagula of the NH Department of Environmental Services (NHDES) on June 7th at SLA. Lycott Environmental will apply herbicide to the milfoil infestation at Kimbell Marina on June 10th. For more information on milfoil or the Ecological Monitoring program, call Lisa at SLA or visit the SLA website.



Earle and Julie Jenkins snowshoe across the summit ridge of Mt. Israel on the SLA Snowshoe Tour. Photo by Eric Morse.

SLA SNOWSHOE TOUR TO MT. ISRAEL

SLA offered its first snowshoe tour on February 9, 2002, following the Wentworth Trail to Mt. Israel. The weather and snow conditions were perfect for the tour, which was co-led by Eric Morse and Steve Sanders. The group met at Mead Conservation Center in Sandwich Notch and began tromping up the mountain at 9:00 am. Some of the participants used the old style wooden snowshoes, but most used the newer aluminum tubing type snowshoes with crampons, which are very helpful on ice.

We took several breaks along the way to enjoy the beautiful winter scenery and views of Squam Lake and the Sandwich Range. The views from the Mt. Israel's summit ridge of Black Mountain, Sandwich Dome and Mt. Chocorua were outstanding, with the deep blue winter sky. After enjoying a long and delicious lunch at the summit, we departed back down the mountain on the Wentworth Trail and reached Mead Conservation Center at 1:30 pm.

SLA is ordering Tubbs Snowshoes and will offer many guided and catered snowshoe tours in the winter of 2003. There will be family and wine and cheese tours to East and West Rattlesnake as well as more challenging trips to Mt. Morgan and Mt. Israel. Check the SLA website and the Loon Flyer for the program schedule and enjoy winter in the Squam Lakes region.

MOON ISLAND LOG BOOK

*The water is warm,
The sun is bright
We fell asleep,
To the loons last night*

*We're camping here,
Two fathers and daughters
Enjoying the glow,
Of the moon on the waters*

*In our little sailboat,
On the afternoon breeze
We pulled our canoes,
Full of stuff with great ease*

*Leaving this place,
Will sure be a bummer
But it's a great place,
To end our summer*

8/30/2001

Molly (10), Rebecca (11) and Dads



David Graham Wolf collects water quality data in the summer of 2001. Photo by Rick Van De Poll.

BIOINVENTORY ASSISTANT DAVID GRAHAM WOLF

An Antioch New England Graduate School student in his final year, David has devoted his new life's work to aquatic ecosystems. Owner and principal of Deep Conservation Consultants of Rindge, NH, he has already made a fine start to his budding career. David joined the Squam Lakes Bio-Inventory team in July of 2001, where he has been a tremendous asset to the smooth functioning of this multi-year, interdisciplinary study of the entire Squam Lakes watershed. Working in smooth cooperation with his peers, David has a particular knack at eliciting humor from the most mundane of tasks, such as spending hours over a bug-sorting table, or picking 5,000 strands of milfoil out of the wrack line, or identifying one of 200 different species of Chironomids (midges) under the microscope. David's bright and cheery disposition can most easily be met in a boat on the lake on Tuesdays or Wednesdays, and occasionally around the SLA offices early in the morning or late in the day. He and his wife Christina are residents of Rindge, NH, where his two beloved dogs, Rio and Raven get the best care and treatment a canine could ever wish for!

THE BUGMEN COMETH CONTINUED

net sweep, an Eckman dredge, a stationary rock basket or a combination of all three. Details of this study will be forthcoming as a part of the final report of Bio-Inventory's first year. Watch for the presentation at the SLA Annual Meeting!

Please note that the base line phase of this study will be completed by early summer. For those interested in obtaining a copy of the final report on the macro-invertebrate study, please contact the Squam Lakes Association.

ART EXHIBIT TO BENEFIT SLA

An exhibition of work by Robert Grady of Holderness will benefit the Squam Lakes Association at McGowan Fine Arts on Hills Avenue in Concord, New Hampshire from June 24th to August 6th. An opening reception will be held on June 28th. Grady's art is mostly landscapes; the works will include dry point, watercolor, woodcut, oil, and acrylic. Grady will also present his work at the Silver Cultural Arts Center at Plymouth State College from July 11 to August 22, which will include some larger pieces of work.

Bob Grady received his art education at the Massachusetts College of Art, The School of the Museum of Fine Arts, Boston, two years of study in Paris, and a M.F.A. from Cranbrook Academy in Michigan. He spent the major part of his teaching career as an instructor of drawing, painting and graphics at The School of the Museum of Fine Arts in Boston.

For many years Bob summered with his family on a Squam island and now lives year around on Burleigh farm in Holderness where he paints in his studio and eagerly awaits the opening of fishing season.



PANCAKE BREAKFAST

Saturday July 13th
8:30 - 10:30 am



Presented by the Lake Use & Preservation Committee

Come learn about the Squam Watershed Plan

Adults: \$7 in advance, \$9 at the door
Children 6-12: \$4.50 in advance, \$5.50 at the door
Children 5 & under: \$3.00

Reservations: Call SLA (603) 968-7336

HIKE FOR THE TRAILS

Saturday July 27th
8:00 am at Mt. Morgan Trailhead



Intermediate Hike: Morgan & Percival Loop.
Distance = 5.3 miles, Time = 3 hr.

Advanced Hike: Mead Conservation Center to Bearcamp River Trail to Crawford-Ridgepole Trail to Mt. Morgan Trail to Rte 113.
Distance = 8.3 miles, Time = 4 hr 45 min.

Sponsored by: Meredith Village Savings Bank and Golden Pond Country Store

For more information visit www.squamlakes.org or call Eric Morse at SLA (603) 968-7336.

4TH ANNUAL HIKE FOR THE TRAILS

The 4th Annual Hike For The Trails fund-raiser is scheduled for July 27, 2002. Pledge forms can be downloaded at the SLA website and will be mailed to SLA members this summer. Enjoy hiking the Squam Range while supporting SLA Trails and the Mead Conservation Center. Each hiker who has over \$100 in sponsorships will receive a free Hike For The Trails t-shirt.

Hike For The Trails is sponsored by Meredith Village Savings Bank and Golden Pond Country Store.

Two hikes are available for hikers of all abilities: **The Intermediate Hike** on the Mt. Percival Trail to the Crawford-Ridgepole Trail to the Mt. Morgan Trail is 4.8 miles. **The Advanced Hike** will start at Mead Base and follow the Bearcamp River Trail to the Crawford-Ridgepole Trail to the Mt. Morgan Trail, which is 8.3 miles.

Meet at Mt. Morgan trailhead at 8 am for both hikes and transportation will be provided to Mead Conservation Center. Please register for the Hike For The Trails by calling Eric Morse at SLA or send an email to: ericmorse@squamlakes.org.

MEAD CONSERVATION CENTER UPDATE

The SLA Board voted to pursue a Special Use Authorization Permit from the U.S. Forest Service to establish the Mead Conservation Center (MCC) in Sandwich Notch. SLA plans to preserve the historic Smith farmhouse and will continue George Jackson Mead's legacy of conservation in the Sandwich Notch area. The facility will house trail crews for SLA, the Student Conservation Association Work Skills Program, and the Wonalancet Outdoor Club. Leave No Trace and Trail Adopter education programs will be offered and camping will be provided for JSLA, camp groups, and the general public.

SLA TRAIL CREW NEWS

SLA received a Recreational Trails Program (RTP) grant of \$14,487 for the Mt. Percival Trail Reconstruction Project. \$10,707 of the grant will support 8-weeks of the SLA Trail Crew and the remaining \$3,780 is a 26% match from the Student Conservation Association (SCA) Work Skills Program and SLA Volunteer Trail Adopters.

The Mt. Percival Trail Projects includes 25 new or reconstructed water bars, 40 rock stairs, 40 stepping-stones, and 0.5 miles of new trail connecting the Mt. Morgan and Mt. Percival trailheads. The SCA Work Skills program will volunteer approximately 400 hours on the project from May 20 – May 25 and will be housed at the Mead Conservation Center.

SLA's Trail Crew of four SCA Resource Assistants and one Trail Crew Leader will work on the Mt. Percival Trail for 8 weeks beginning on August 19. The staircase and waterbar construction will reduce erosion on the trail from water runoff and hikers' footsteps. The new 0.5 mile trail between the Mt. Morgan and Mt. Percival trailheads will allow hikers to hike the popular Morgan Percival Loop without hiking along Route 113. Timber bridges at two stream crossings along the trail will prevent hikers from widening the trail.

SLA USED BOAT SALE - DOCKS & MOORINGS AVAILABLE

Wilderness Systems "Manteo" Kayak	Call
Necky "Looksha IV" Kayak	Call
Necky "Eskia" Kayak	Call
Escape "Captiva" Sailboat	Call
Seasonal Dock Rental (25 hp max.)	\$775
Seasonal Mooring Rental (sailboats only)	\$525



For more information visit the SLA website or call Steve Sanders at SLA (603) 968-7336



SLA CALENDAR OF EVENTS

- June 1 National Trails Day at Old Bridle Path to West Rattlesnake 9:00 am - 3:00 pm.
June 7 Weed Watcher Training at SLA 9:00 am - 1:00 pm.
June 15 Trail Adopter Training at Mead Conservation Center 9:00 am - 3:00 pm.
June 22-23 Lightning Sailboat Clinic at SLA 9:00 am - 2:00 pm.
June 22- Oct. 7 Eric Morse Photography Exhibit at SLA Resource Center.
June 28 Robert Grady Art Exhibit Opening at McGowan Fine Arts in Concord. Show runs from June 24 - Aug. 6.
June 28 Water Monitor Luncheon at SLA 12:00 - 2:00 pm.
July 1 Summer Youth Programs commence Monday - Friday.
July 6 Free Courtesy Boat Inspection at Church Island docks by Auxiliary Marine Patrol 1:00 - 4:00 pm.
July 7 Lightning Sailing Races at Diamond Ledge 2:00 - 4:00 pm through August 18
July 13 SLA Pancake Breakfast at SLA 8:30 - 10:30 am.
July 14 Bike Around the Lake. Meet at SLA at 1:00 pm.
July 20 Squam Wildlife Census 8:00 - 9:00 am
July 20 Squam Summerfest, SLA Resource Center 10:00 am - 2:00 pm
July 27 Hike for the Trails - Meet at Mt. Morgan Trailhead at 8:00 am.
July 27-28 Kayak Instruction Camping Tour to Bowman Island. 9:00 am Sat. to 3:00 pm Sun.
August 3 Annual Meeting at SLA Resource Center 4:30 pm
August 4 Around the Lake Sailing Race at Piper Cove 2:00 pm.
August 13 Glimpses of an Early Squam Camp, on Coolidge Farm Road in Sandwich at 10:00 am.
August 17-18 Lightning Sailing Regatta at Diamond Ledge 2:00 - 5:00 pm.
August 17-18 Kayak Instruction Camping Tour to Moon Island. 9:00 am Sat. to 3:00 pm Sun.

NON-PROFIT ORG.
US POSTAGE
PAID
HOLDERNESS, NH
PERMIT #6



Squam Lakes Association
PO Box 204
Holderness, NH 03245
603-968-7336
e-mail: info@squamlakes.org
Address Service Requested